

# COMMUNITY NEWS



Issue 38 | Winter 2026

In great news for Council and the community, Warakirri College has been approved to lease the entire commercial space in Council's new Civic Centre, part of the Wollondilly Cultural Precinct in Picton.

Following a comprehensive marketing campaign, Council is moving ahead on a long-term lease agreement with Warakirri College and the DA is now lodged, with the college planning to open in Term 4 of 2026.

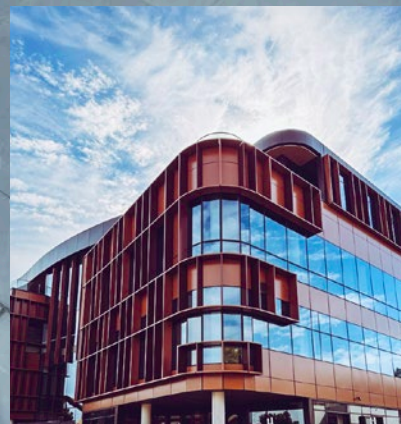
This is a positive partnership, providing a fantastic community asset that will support local young people who have disconnected from mainstream schools. Warakirri is a well-respected independent school which already has a number of campuses, and has a great record for students moving on to study at University or TAFE.

The college caters for students aged 15 to 22 undertaking RoSA and HSC qualifications who can't attend mainstream education or who haven't felt supported in traditional learning environments. The Picton campus will accommodate approx 120 students and 20 staff.

As the Shire's population continues to grow, the Wollondilly Civic Centre, together with the planned new Council Operations Depot, is a critical investment to ensure Council is able to manage and improve services for the Wollondilly community.

Due to the planned capacity allowing a portion of the building to be leased, construction of the Civic Centre has come at no cost to ratepayers. The lease agreement aligns with Council's property investment objectives and will deliver significant ongoing economic and community benefits for the whole Shire. The Civic Centre project has been independently estimated at a \$732M total economic benefit to the Wollondilly economy, including local businesses.

The broader Wollondilly Cultural Precinct is really taking shape now, with the popular Performing Arts Centre well into its second season of live performances. Upgrades to the Wollondilly Shire Hall have made the much-loved building even more usable for community groups, while embracing the historic features that make it the true heart of the precinct. Around the corner, the Children's Services Building is providing quality childcare in the centre of town for local families – and we are looking forward to the creation of the Village Green in the next phase of the Precinct project.



Images: Left - Wollondilly Civic Centre. Right - Mayor of Wollondilly Matt Gould with Warakirri Principal Carolyn Blanden

FIND OUT MORE ABOUT  
WARAKIRRI COLLEGE



# WASTE SERVICES

## MADE EASIER

Wollondilly's waste services are focused on what matters most:  
reliable everyday bin collections and simple ways to manage waste at home.

Council provides a range of services to help you manage rubbish, recycling and garden waste. Your regular red, yellow and green bin collections will continue as usual, delivering the same dependable service you rely on each week.



### COUNCIL CLEAN-UPS ARE NOW EASIER!

The service is now bookable, so you can choose a collection date that works for you.

Same size. Same items. More flexibility.

Here's how it works:

- Choose your collection date
- Book online
- Get handy reminders
- Put your items out for collection

### STAY UP TO DATE WITH OUR NEW WASTE HUB

Need to check which bin goes out when? Simply head online to quickly look up your collection schedule.

Whether you're checking your bin day, planning a clean-up, or looking for tips on what goes where, Council's website has the information you need.



SCAN FOR ALL YOUR  
WASTE SERVICES INFO

# LOCAL ROADS

## RECEIVE BOOST FROM GRANT FUNDING

Council's roads crews will hit the ground running on 1 July 2026 as we start the rollout of Council's 2026/27 Capital Works program. We are continuing to invest more each year into our 900km+ road network, which we know is the top priority for our residents.

We've also been successful in our applications for State and Federal grant funding for a number of projects, which means our ratepayers are getting even more bang for their buck on our roads.

### Key grant-funded roads projects for the 2026/27 Financial Year include:

- **Hawthorne and Johnston Roads, Bargo** - Between Bargo Road and Johnson Street - \$3.86 million from the Safer Local Roads Infrastructure Program (SLRIP) for kerb and gutter, new footpaths, road widening and stabilisation, and drainage improvements.
- **Radnor Road, Bargo** - Between Panorama Road and Bargo Sportsground - \$3.14 million from SLRIP for kerb and gutter, new footpaths, road widening and stabilisation, and drainage improvements.
- **Greenbridge Drive, Wilton** - \$980,000 from NSW Government's Kids Get Active program to replace the children's crossing with a raised pedestrian crossing with related road safety improvements.
- **Silverdale Road, from Nortons Basin Road to 2580 Silverdale Road, Wallacia** - \$1.02 million from Australian Government Black Spot program for road safety improvements including widening sealed shoulders, installing audio-tactile centre lines, a painted median, and upgrading the road surface to a high skid-resistant seal.

# BUILDING CERTIFICATION SERVICES

### Planning building work in Wollondilly Shire?

Council's Building Certifiers can provide Construction Certificates, Complying Development Certificates and Occupation Certificates for all building types.

Our certifiers are professionally qualified Building Surveyors, registered with NSW Fair Trading. We're practical, helpful and friendly, and we'd welcome the chance to support your project.

We also offer ongoing support and a wider range of services than a private certifier. We cover the whole Shire every business day and can work with builders to arrange suitable inspection times.

Call Council's Building Certifiers on 4677 1100 to see how we can help.



SCAN QR CODE  
FOR MORE INFO

## A NEW ERA OF SPORT FOR WARRAGAMBA

Exciting upgrades are happening now at Waterboard Oval, Warragamba, transforming the site into a modern sport and recreation hub for the area.

The project includes an extension and full refurbishment of the existing amenities building, a new amenities building with additional changerooms and public toilets, four new netball courts, a sealed 89 space car park and landscaping works.

Stage Two is also moving ahead, delivering upgrades to the soccer fields including drainage, irrigation, lighting and a second full-size field, expected to be ready for the Winter 2027 season.

Funded through the NSW Government's Western Sydney Infrastructure Grants in partnership with Council, the project is a major investment in Warragamba's sporting future, with a new multi-purpose building and formalised car park at Warragamba Sportsground also planned from 2027.





# FUTURE WOLLONDILLY

## PROUDLY LEADING, PROUDLY WOLLONDILLY

Wollondilly is a beautiful Shire that is entering a defining growth chapter that will reshape the region over the next 10-30 years, and if it's done well, we have a real opportunity to make Wollondilly even better. We are a key link between the Illawarra and Western Sydney, and also home to productive rural lands, historic villages and beautiful bushlands. Wollondilly has been identified for two State-led growth areas: Wilton, a strategic centre soon to be home to 50,000 residents and Appin, part of the Greater Macarthur Growth Area.

'Future Wollondilly' outlines Council's key advocacy priorities as we approach the next State and Federal elections, and as we make sure our current and future communities have everything they need to thrive. Our approach at Wollondilly is pretty simple: we want to lead with confidence, be clear about where we're heading, and make sure growth delivers real benefits for community and business.

In recent months, Council has made submissions on our key priorities for the next budgets for the State and Federal Governments, and we have been proactively working with Government, stakeholders and our local politicians to put our best foot forward.

Scan the QR code to learn more about these priorities for our growing Shire.




## CELEBRATING SENIORS

A FESTIVAL OF FUN AND CONNECTION

Council delivered a vibrant Wollondilly Seniors' Festival this year in collaboration with local community organisations.

The program featured wellbeing sessions, live music, craft activities and social events, giving seniors the chance to connect with others, learn new skills and enjoy experiences that support personal growth and independence. Thank you to everyone who took part and supported the events.

## THEATRE IN MOTION

Wollondilly Library and the Wollondilly Performing Arts Centre are hosting an immersive acting and physical theatre workshop for young adults, led by local Clockfire Theatre Company. Participants will explore devised theatre through movement, spoken word, objects and design, working together to create original forms of visual storytelling.

**Wednesday 15 July**  
10am – 1pm  
Wollondilly Performing Arts Centre  
For young adults 12-18 years



Scan to find out more or book



# MACARTHUR NATURE COMPETITION



The Macarthur Nature Competition is a regional environmental education program run by Wollondilly, Camden and Campbelltown Councils.

Open to all ages, it invites the community to explore and celebrate local plants, wildlife and nature through art, creative writing and digital photography, with a focus on caring for Country.

**OPEN FROM 22 APRIL – 26 JUNE | ENTER NOW!**





# DOGGY DAY OUT

SUNDAY 16 AUGUST 2026

9AM-1PM

BARGO SPORTSGROUND

MARKET STALLS

SPECIALTY TALKS

WOLLONDILLY ANIMAL SHELTER

VET SERVICES

DOG GROOMER

KID'S ACTIVITIES

MAYOR'S

# PINK DIAMOND

## Gala

RAISING MONEY FOR LOCAL BREAST CANCER SUPPORT SERVICES



12 September 2026



Wollondilly Performing Arts Centre



Formal with a touch of pink and diamonds

# ARTS



# ALIVE

10 OCTOBER 2026



GET INVOLVED AT COUNCIL MEETINGS AND FORUMS



WATCH COUNCIL MEETINGS IN PERSON OR ONLINE, OR REGISTER TO SPEAK AT A COMMUNITY FORUM!



# WHAT'S ON IN WOLLONDILLY?

CAFÉ CONNECT - PREPARE FOR EMERGENCIES | 30 June

NAIDOC FLAG RAISING CEREMONY | 8 July

WASTE TO ART EXHIBITION | 15-18 July

CAFÉ CONNECT - EXPLORING GOVERNMENT  
ASSISTANCE PROGRAMS | 28 July

DOGGY DAY OUT | 16 August

CAFÉ CONNECT - YOU ONLY DIE ONCE! | 25 August

MAYOR'S CHARITY EVENT | 12 September

NURSERY OPEN DAY | 26 September

CAFÉ CONNECT - DEMENTIA AWARENESS | 29 September

ARTS ALIVE | 10 October

CAFÉ CONNECT - BEAUTIFUL BOTANICALS | 27 October

BLOOM | 8 November



SCAN TO FIND OUT THE LATEST UPDATES  
& NEWS ON WOLLONDILLY EVENTS!



## NURSERY OPEN DAY

SATURDAY 26 SEPTEMBER

8AM-12PM

THE ROBIN DAVIES  
WOLLONDILLY  
COMMUNITY NURSERY

Wonga Rd, Picton  
Behind the animal shelter

SUBSCRIBE TO

# WOLLONDILLY eNews

Wollondilly eNEWS is Council's monthly  
eNewsletter, direct to your inbox.



SCAN THE QR CODE  
TO SUBSCRIBE NOW!



## YOUR COUNCILLORS

### MATT GOULD

MAYOR | WOLLONDILLY SHIRE

P 0427 936 471

E matt.gould@wollondilly.nsw.gov.au

### MATTHEW DEETH

DEPUTY MAYOR | EAST WARD

P 0428 335 743

E matthew.deeth@wollondilly.nsw.gov.au

### JACQUELINE JENSON

COUNCILLOR | NORTH WARD

P 0455 310 546

E jacqueline.jenson@wollondilly.nsw.gov.au

### HILTON GIBBS

COUNCILLOR | NORTH WARD

P 0407 872 138

E hilton.gibbs@wollondilly.nsw.gov.au

### TRISH HILL

COUNCILLOR | NORTH WARD

P 0461 370 411

E trish.hill@wollondilly.nsw.gov.au

### ALLY DENCH

COUNCILLOR | NORTH WARD

P 0408 651 923

E dench.ally@wollondilly.nsw.gov.au

### BENN BANASIK

COUNCILLOR | EAST WARD

P 0434 832 636

E benn.banasik@wollondilly.nsw.gov.au

### SUZY BRANDSTATER

COUNCILLOR | EAST WARD

P 0407 801 242

E suzy.brandstater@wollondilly.nsw.gov.au

### PAUL ROGERS

COUNCILLOR | EAST WARD

P 0407 825 774

E paul.rogers@wollondilly.nsw.gov.au

## FIND OUT MORE, PARTICIPATE AND GET IN TOUCH

Here are the upcoming meeting dates for your 2026 calendar:

#### Community Forum | 6.30pm

Wollondilly Shire Hall, Picton

- Tuesday 16 June
- Tuesday 21 July
- Tuesday 18 August

#### Council Meeting | 3.30pm

Wollondilly Shire Hall, Picton

- Tuesday 23 June
- Tuesday 28 July
- Tuesday 25 August

#### Local Planning Panel Meeting | 3.30pm

Wollondilly Shire Hall, Picton

- Thursday 4 June
- Thursday 2 July
- Thursday 6 August

Check Council's website for the latest information as these dates are subject to change.

#### Council Contacts

P (02) 4677 1100

F (02) 4677 2339

E council@wollondilly.nsw.gov.au

Postal Address: PO Box 21, Picton, NSW, 2571

In Person: Wollondilly Civic Centre,  
64 Menangle Street, Picton, NSW, 2571

Opening Hours: Monday-Friday 8:30am to 5pm